

MESSAGE FROM THE PRINCIPAL

Dear Parents/Guardians,

The last four months have been the most surreal any of us have ever faced and I am enormously proud of the fact that we have arrived at the end of the academic year, stronger for it. The term has required the strength and resilience many of us never knew we possessed and the learning we have encountered along the way has not just been reserved for the students. My thanks to you all is heartfelt and sincere, and I am honoured to be a member of this unique Quinton family.

I have never felt alone in my responsibility of ensuring the very best for your children. Your input as parents, the thoughts, feelings and contributions from my staff, along with the feedback from the students, has all combined into the most welcome and valued group effort. We have made the right decisions, at the right time. We have succeeded, as a team, in implementing the ever-changing guidance from the government and we have adapted and moulded our approach together, in response to the changing picture of this corona virus pandemic. Regardless of what the immediate future holds, I would like to ensure that we remain proud of, and defined by, the strength of character, strength of resilience, versatility, adaptability and overwhelming sense of positivity and community spirit, we have demonstrated in recent months. We are very well equipped to face the future with courage and I know we will continue to face it as one.

I am enclosing a document that outlines the plans we have for our return in September. It will inform you with practical information and guidance on how we will move forward under changing circumstances, plans for future school development, celebratory reflection, as well as guidance on how teaching and learning will resume at the beginning of the Autumn Term.

If one thing is certain, it is that our future is un-certain. But we have the blueprint; we have tried and tested strategies and we have proven we can adapt overnight. We will continue to succeed in the face of adversity, and we remain conscious of the fact that we are making the history upon which future generations of students will focus.

Until we meet again, I wish you all a wonderful summer. I hope you find time to relax and enjoy family and friends and I wish you all continued good health.

With warmest wishes,

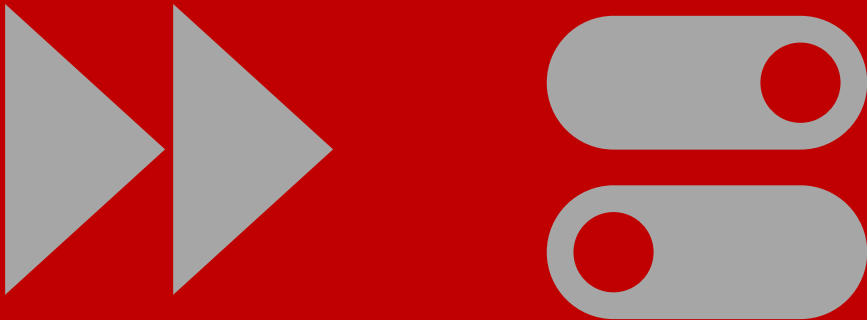


HOW WILL IT WORK?

We have done a large amount of scenario planning and we're confident we can get back to normal.

The latest government guidelines have significantly reduced the need for social distancing and as a result schools will be encouraged to return to a full timetable for all year groups.

This is great news and to the right is a summary of what we know now. This is, of course, conditional on the continued downward trend of the infection rate.



GUIDANCE SUMMARY

Based on the government guidance released on 2 July this is what we are basing our planning on:

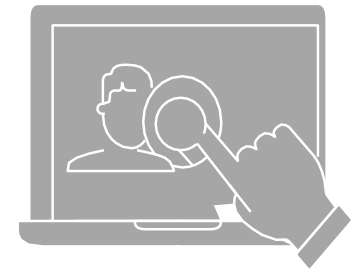
- Preparatory - the bubble concept will be increased. This means our classes can return as full year groups, and we may even have the flexibility to create larger bubbles for a whole key stage for example
- Senior/Preparatory (with specialist teachers) - the bubbles will be increased to incorporate whole year bubbles. This will enable us to deliver lessons as per normal with full classes. Specialist teachers will be able to move between classes provided they maintain social distancing.
- Some of the features from this term may need to remain such as staggered timings and one-way systems. Our increased cleaning regimes will continue to ensure we mitigate the risks to our Quinton House community.
- School services such as catering and transport can return to relative normality with some adaptations to mitigate viral spread.

NEW INITIATIVES FOR NEXT YEAR

As part of our drive to ensure that all students have an uninterrupted educational experience with us, we are giving every student in Year 3 and above their own touchscreen laptop/iPAD.

Personal devices open the door to combining online study with face-to-face teaching and learning so the best of each is adopted. It can transform many areas of the education process: student agency and digital portfolios (how can I best showcase my learning?); collaboration (how can I develop my interpersonal skills when working with others in class and around the world); assessment and feedback (how can I learn from immediate and meaningful feedback?)

On a more practical level we need to ensure students are prepared should there be a need for remote learning next academic year; for example, due to a second peak of coronavirus or the need to self-isolate. In addition, there may be a new scenario next year, with teachers self-isolating at home and delivering lessons remotely to students in classrooms. We need students to have access to a dedicated, suitable, safe and reliable device that can enrich their learning experience.



NEW INITIATIVES FOR NEXT YEAR

1-2-1 Devices – How it will work

- The school will fund this in the next school year. The cost will be added to school fees from 2021/22 onwards for the year groups who have these devices
- It will work out at approx. £4 per week from 2021/22 onwards – we are able to get such a low cost because we have negotiated at scale for all the European schools in the Cognita family
- This device will be dedicated to school work at home and in the classroom
- It will be set up with software to make it age appropriate and safe, allowing support to be offered remotely, and ensuring all the required educational applications are included
- Devices will be insured so lost or broken devices are replaced quickly, and schools will have spares
- Investment in our infrastructure will be made over the summer and within the year ahead
- Teachers and students will have access to training and support materials to help them get the most benefit from the device and how it can contribute to a blended education
- Devices will be rolled out from September – more details to follow on the exact timings
-



NEW INITIATIVES FOR NEXT YEAR

During the lockdown period we also took action to develop a number of other initiatives which have enabled us to lead the way in online learning and teaching and we intend to build on this next year.



- **Masterclasses** - our teachers have benefited from working with global experts on how to build curriculums that offer a **blended educational experience** and how we can approach **assessment** of student's progress in new ways
- **Partnerships** - with innovative learning platforms that use artificial intelligence to create adaptive and personalised learning paths for students – more 'books' on our shared 'virtual bookshelf'
- **Inspiring Futures programme** - developed for our Year 11 cohort to help them get prepared for the future. The programme focused on non-academic character development such as leadership, communication, teamwork, creativity and emotional intelligence. We will continue to develop this working with some expert partners to stretch and challenge all those involved in the programme.
- **Collecting the best content from our global family** - as a group we are developing an online platform which will host bespoke content curated from our expert educationalists from across our 80 schools. It's early days for this exciting project so more to follow soon.





WILL THERE BE AN ANNUAL INCREASE TO FEES NEXT YEAR?

No. Given the exceptional circumstances, the economic situation and the value we place on our relationship with our parent cohort there will be no fee increase for the 2020/21 school year.

ARE SPORTS, CLUBS & TRIPS RETURNING?

Yes, where possible. We are keen to return to 'business as usual' as much as possible, and this component of education is important.

Certain non-contact sports are approved, and clubs can generally re-start, although there are some restrictions in the latest guidance that we will work through over the summer. We are also planning to have the wrap around care offer of before and after school clubs.

Domestic trips are permitted, but not residential. Overseas trips are not yet permitted. We will keep a sharp eye on government advice on these topics as guidance changes frequently.

WILL SCHOOL TRANSPORT RESUME?

Yes. We are following government advice closely on this and working with our transport suppliers. Risk mitigations we are investigating are the suitability of face coverings (like on public transport), cleaning regimes, and route reviews.

WILL CATERING RETURN TO NORMAL?

Yes. We may need to operate staggered mealtimes, and apply some other operational safeguards, but we intend to return to catering as it was before as far as we can, within the guidelines.

WHAT ABOUT LOCAL LOCKDOWNS?

We are planning in detail what happens if the school needs to temporarily close in the case of an outbreak or localised lockdown. If the call comes we can respond quickly, following a pre-agreed plan.

Do students return wearing school uniform?

Yes. Summer or winter uniform should be worn. Blazers are optional until after the October break. We will continually assess the situation and adapt if and when necessary.

WHAT ABOUT INFECTION CONTROL?

We will continue our robust cleaning regime next year and work closely with our cleaning staff to ensure every possible risk mitigation is taken.

We are also reviewing our infection control procedures over the summer to allow us to track confirmed or suspected cases and communicate with parents in the smoothest way possible.

CAN MY CHILD USE THEIR OWN DEVICE?

We have consciously and purposefully decided against a so-called 'bring your own device' policy. Research indicates that it can have a negative impact because the broad range of devices means teachers spend too much time supporting students to fix issues, a role teachers should not be doing. It also presents a security risk to the school network, will not necessarily be suitable for academic work, and will not always have replacement insurance.